

From April 2026, **throughout Kamakura City**

Door-to-Door Collection of Combustible Waste Begins



What is door-to-door collection?

In this system, garbage collector collect waste house by house as each household places their waste within their property facing the street.

What types of waste are covered?

Combustible waste. Please dispose of other items at clean stations (waste collection points) as you do now.

How do I put it out?

Please put waste in the Paid Bags (Designated Collection Bags) and put them out for collection as you do now. Residents of detached houses and apartment complexes will dispose of their waste in different ways. Please see inside the pamphlet for details.



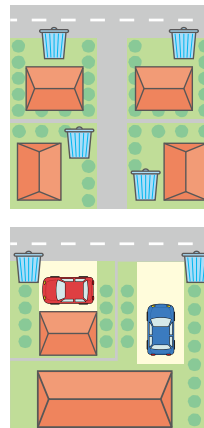
How to dispose of combustible waste

Detached houses

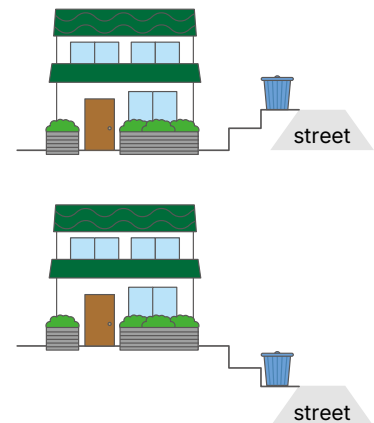
Please put out combustible waste within your property facing the street. ※ Do not dispose of it on the street.



【Top view】



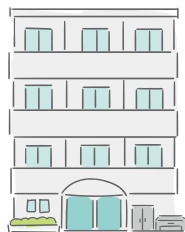
【Side view】



Apartment complexes

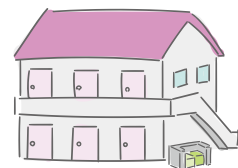
If your apartment complex **has** a clean station

The disposal method will not change. Please dispose of combustible waste at the clean station within your apartment complex as you do now.



If your apartment complex **does not have** a clean station

Please dispose of your waste at the newly-established door-to-door disposal location on the premises.



Why change to door-to-door collection?

To address some of the issues with collection at clean stations

【Management and maintenance】

In some cases, the burden of cleaning and tidying the clean station falls heavily on a few people. Even where there are no problems at the moment, the aging society and people moving in and out may make arranging the collection point or organizing a roster problematic in the future.

【Effort involved in waste disposal】

Disposing of waste at a clean station away from the house necessitates effort for households with children or elderly family members. In addition, diversifying lifestyles make disposing of waste at certain times difficult for some people.



【Animal damage】

Animals such as crows and cats can make a mess of clean stations, necessitating effort to clean them up.

【Illegal Dumping】

Collection at clean stations makes identifying who disposed of certain waste difficult, meaning that rule violations cannot always be addressed.

Promoting further waste reduction

Door-to-door collection makes clear who has disposed of what waste, creating greater awareness of the responsibility to sort waste and likely encouraging further waste reduction and recycling.

[From April 2026]

Collection Days by District

(only districts where changes occur are listed)

※ Districts not listed on the calendar have no changes to their collection days.

Items with changes to the current collection days

District	Monday	Tuesday	Wednesday	Thursday	Friday
Hase / Gokurakuji / Sakanoshita	Paper & Fabric Plant Trimmings	Combustible Waste	PET Bottles Non-Combustible Waste (1st) Plastic Goods (3rd)	Cans & Bottles Plastic Containers and Packaging	Combustible Waste
Inamuragasaki / Shichirigahama-higashi	Paper & Fabric Plastic Containers and Packaging	Combustible Waste	PET Bottles Non-Combustible Waste (1st) Plastic Goods (3rd)	Cans & Bottles Plant Trimmings	Combustible Waste
Kajiwarra (1- through 5-chome) Terabun (1- through 3-chome) Yamasaki (Uguisuyama)	Combustible Waste	Plant Trimmings Plastic Containers and Packaging	PET Bottles Non-Combustible Waste (4th) Plastic Goods (2nd)	Combustible Waste	Paper & Fabric Cans & Bottles
Kajiwarra (excluding 1- through 5-chome) Terabun (excluding 1- through 3-chome)	Combustible Waste	Plant Trimmings Plastic Containers and Packaging	PET Bottles Non-Combustible Waste (4th) Plastic Goods (2nd)	Combustible Waste	Paper & Fabric Cans & Bottles
Kobukuroya	Combustible Waste	Plant Trimmings Plastic Containers and Packaging	Paper & Fabric PET Bottles	Combustible Waste	Cans & Bottles Non-Combustible Waste (3rd) Plastic Goods (1st)
Dai (excluding 1- through 5-chome)	Paper & Fabric Plastic Containers and Packaging	Combustible Waste	Cans & Bottles PET Bottles	Plant Trimmings Non-Combustible Waste (4th) Plastic Goods (2nd)	Combustible Waste
Okamoto	Cans & Bottles Plant Trimmings	Combustible Waste	Paper & Fabric PET Bottles	Plastic Containers and Packaging Non-Combustible Waste (1st) Plastic Goods (4th)	Combustible Waste
Ueki	Cans & Bottles Plant Trimmings	Combustible Waste	Paper & Fabric PET Bottles	Plastic Containers and Packaging Non-Combustible Waste (2nd) Plastic Goods (4th)	Combustible Waste
Tamanawa / Shiromeguri / Sekiya	Cans & Bottles Plant Trimmings	Combustible Waste	Paper & Fabric PET Bottles	Plastic Containers and Packaging Non-Combustible Waste (3rd) Plastic Goods (1st)	Combustible Waste

How to check the monthly collection date

Note that, for example, "1st Friday" means the 1st Friday of the month, not the Friday of the 1st week of the month.

Aims of collection day changes

Improving collection efficiency and reducing collection costs

For combustible waste collection, adjusting the number of households in each of the Monday/Thursday and Tuesday/Friday collection areas means that the number of collection trucks per day can be standardized. Doing so aims to improve collection efficiency and reduce collection-related costs.

Avoiding overlap between combustible waste and other item collection days

One of the aims of introducing door-to-door collection of combustible waste is reducing the effort involved in waste disposal.

Making adjustments so that combustible waste and other item collection days do not overlap aims to maximize the reduction in effort involved. (We will ensure that you do not need to dispose of waste in two locations – by your house and at the clean station – on the same day.)

**If you live in a detached house,
please prepare a container resistant to animal damage,
such as one with a lid**

Examples



Please ensure the container will not be blown around by the wind, such as by securing it in place or placing weights inside it.



Frequently-asked questions

Q1 What time should I put out my waste?

A1 As you do now, put out waste by 8:30 a.m. on collection days (twice a week).

Q2 How much waste can I dispose of at once?

A2 As is the case now, up to five Paid Bags (Designated Collection Bags) at once.

Q3 Why only combustible waste?

A3 Combustible waste is often subject to animal damage. As it is collected twice a week, door-to-door collection of combustible waste is likely to minimize the effort involved in management and maintenance of clean stations. The City will consider expanding the program to other items based on the experience of door-to-door collection accumulated through combustible waste.

Q4 How should I put out disposable diapers (except those for pets)?

A4 As you do now, flush soiled items down the toilet, put only the diapers in transparent or semi-transparent bags of up to 45-liter size, and put them out on the same day as the combustible waste.



▲ Example of disposal at detached houses

Q5 How should I dispose of cleaned up waste?

Cleaned up waste is...
Waste collected when tidying up clean stations and public roads

A5 As you do now, sort it as much as possible and put it in transparent or semi-transparent bags of up to 45-liter size. Write "SEISOU GOMI" (cleaned up waste) in large characters on the bags, and put them out with the combustible waste. For waste other than combustible waste, sort it as much as possible and dispose of it at the clean station on the collection day for each item.



▲ Example of disposal at detached houses

Q6 By what time will waste be collected?

A6 Collection time is between 8:30 a.m. and 3:30 p.m. If your waste has not been collected by 3:30 p.m., please contact the Door-to-Door Collection Unit of the Resource Recycling Division.

Q7 How will you collect waste from where there is no vehicle access?

A7 The collection team will stop their truck in a safe place and conduct collection on foot.

Inquiries

Door-to-Door Collection Unit, Resource Recycling Division, Kamakura City

In the Fueda Recycling Center , 1-11-34 Fueda

Tel. 0467-40-5542 E-mail : kobetsu@city.kamakura.kanagawa.jp

Issued in November 2025



See the City website for details.