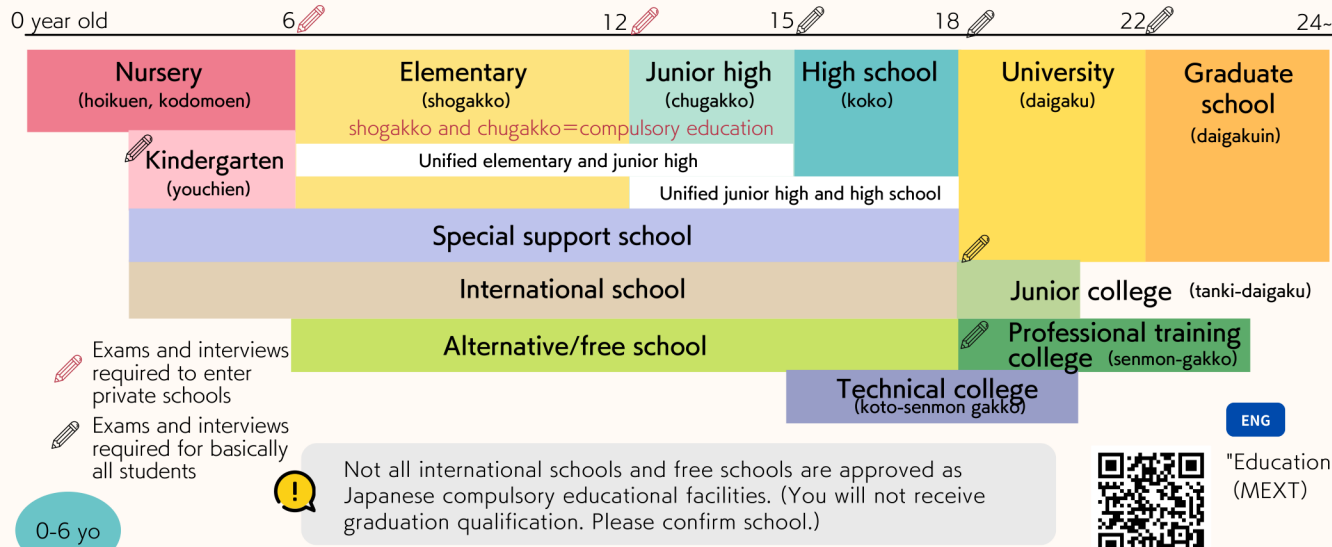




Children must go to school when they are 6-15 years old (compulsory education).

Contact city hall if your child is a foreign national.



0-6 yo

	Students	Where to ask/apply
Nursery (Hoikuen)	0-6 yo both parents working	hoiku ka 保育課
Nursery (Kodomoen)	1-6 yo	Directly to kodomoen
Kindergarten (Youchien)	2-6 yo	Directly to youchien

6-15 yo

	Students	Where to ask/apply
Shogakko (elementary school)	6-12 yo	Public schools: School chosen by address. There is no entrance exam. Private schools: Private schools require you to pass the entrance exam.
Chugakko (junior high school)	12-15 yo	Public elementary and junior high schools

- Public schools are free, but you will need to pay fees such as lunch, field trips, and school supplies.
 - There is school lunch (給食 *kyushoku*) at public elementary/junior high schools. You can also apply to bring your own lunch.
 - Consult school/Board of Education for allergies.
 - If you need to move, you may need to change schools. Contact your school first.
 - The city will send you "Medical Examination in Attending School" (就学時健康診断受診票 *shugakuji kenko shindan jushin hyo*) in September of the year before your child enters elementary school.*
 - Your child will attend medical examination during Oct/Nov at the elementary school he/she is to enter. You will then receive "Letter of Admission" (入学通知書 *nyugaku tsuchi sho*) in January.*
- *Contact the city hall in case you do not receive these documents or letters.



Education System and Learning Japanese-Language (Tokyo Intercultural Portal Site)
More than 70 languages



Multilingual information (for foreign national guardians) (Kanagawa International Foundation)
See the bottom of the website for information.

ENG CHN SPA POR VIET
TAG NEP RUS UKR



About schools in Japan and events (Kotokoto)

ENG CHN やさ日

Special needs schools/classes

Consult "Kyouiku Shidou-ka" for children with special needs.

kyouiku shidou ka
教育指導課
0467-61-3812

Alternative School/Free school

A place for children (and parents) not attending school.

Free school Largo
0467-32-3830

NPO Seeds App
045-392-3559

Subsidy: City will partially subsidize alternative schooling. Need to apply. 青少年課 0467-61-3886

Places for elementary school children after school	who can go	Fee	Application
kodomo no ie (gakudo) 子どもの家 (学童)	Elementary school children (both parents working)	Applicable	seisyonen ka 青少年課
houkago kodomo hiroba 放課後子どもひろば	Elementary school children	500 yen/year for insurance	0467-61-3886

Children can play and study at a facility near school with adult supervision.

Some children go to "naraigoto" and/or "juku" after school and/or on holidays. "Naraigoto" are lessons like piano and swimming. "Juku" is cram school.

Places to ask

If you have any concerns about your child at school, contact the school teacher first. Other places to consult are listed below.

Foreign residents education consultation	Kanagawa Earth Plaza	045-896-2972 ENG CHN SPA POR VIET TAG やさ日
About school	gakumu ka, gakumu tanto 学務課学務担当	0467-61-3796
About school lunch	gakumu ka, kyushoku tanto 学務課給食担当	0467-61-3804
About school life	kyoiku shido ka 教育指導課	0467-24-3386
About school, home and family (Children can call)	24 hour Childrens' SOS dial	0120-0-78310 0466-81-8111

Other consultations → P13, 14